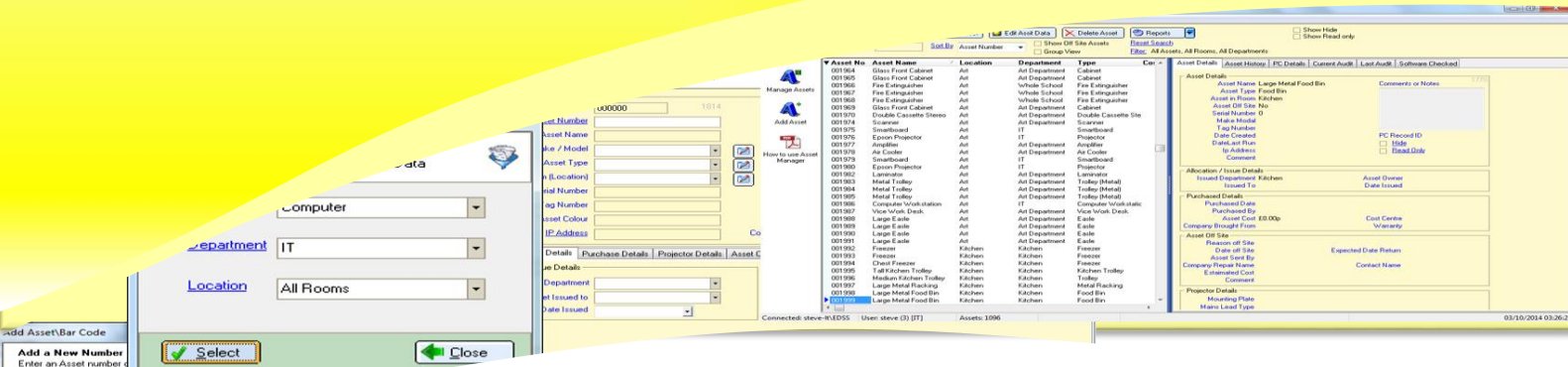


# Asset Manager



## Asset Manager

Asset Manager is used to keep Track of all your Assets in your Company.

Departments can view their own Assets when the user logs on, the system will show any Asset they have is in their department.

## Features:

- Departments can see their Own Assets
- Export Asses to Excel
- Import Assets from Excel
- Blank Excel Template for New departments.
- Hide Assets if Required
- Filter Assets

## Filter

by Type, Location and Department

## On Main screen

- Asset Details
- Asset History
- Link to PC details
- Current Audit (Laptops only)
- Last Audit
- Software Checked

## Allocation / Issue Details

Shows who has been issued with the Asset

## Purchased Details

How much was the Asset brought for, by who and when Purchased from who Any Warrant on the Asset

## Asset Off Site

Show if Asset is On/Off Site awaiting Repairs

## Features cont.

### Projector Details

- Mounting Plate type
- Type of Mains connector
- Can Plug be reached
- Date fitted

### Asset Reports are:

- Audit
- Cost
- Department

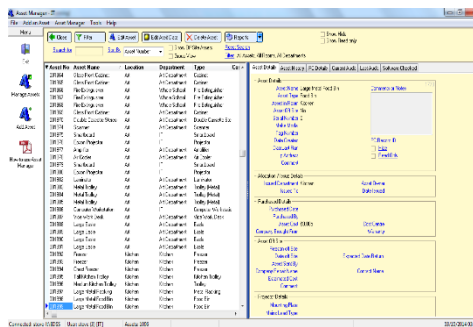
### Sort by:

- Asset Number
- Asset Name
- Type
- Location
- Make Modal
- Record Number
- Serial Number
- Department

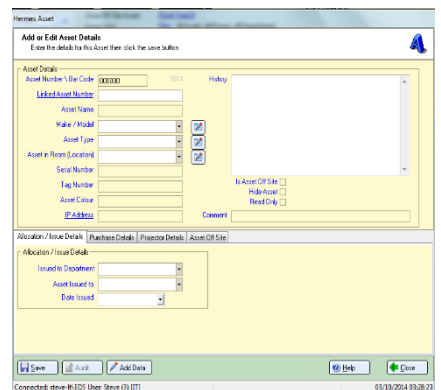
### Search:

You can search the database for any of the following.  
Asset Number, Asset Name, Type, Location, Make, Modal, Record Number, Serial Number, Department

### The Main Screen



The Screen below is the Asset Edit Screen, where you do any changes to the Asset



## Programs in Hermes

Other Programs in the Hermes Suite:

- After School Club
- Allocation
- Alternative Education
- Asset Manager
- Bookings
- Call Logger
- Confiscated Items
- Controlled Assessment
- Detention
- Forms On Line
- ID Cards
- Learning Identification Sheet
- Network Devices
- Parental Engagement
- Photos
- Seating Plan
- Software Audit
- Stock Control
- User Display
- Visitor Log
- Work Experience

Visit the website to find out more  
All Programs can be Customised to your Needs

Hermes Software

Tel: 0203 239 2399

[www.hermessoftware.co.uk](http://www.hermessoftware.co.uk)

[hsinfo@hermessoftware.co.uk](mailto:hsinfo@hermessoftware.co.uk)

